



Linden Gardens, London, W4 2EG

Guide Price £799,950

WHITMAN & CO.

SALES · LETTINGS · COMMERCIAL

- 1205 sqft split-level apartment
- Excellent proportions throughout
- Central location close to numerous amenities
- South facing roof terrace
- 21'7 Reception room
- No onward chain

Tenure - Leasehold with Share in the Freehold
 Lease length - 86 Years remaining
 Ground rent - Peppercorn
 Maintenance charge - 1/3 of outgoings
 Local authority - Hounslow
 Council Tax - Band D

THE PROPERTY

An exceptionally spacious (1205 sqft) split-level apartment with a private entrance and open aspect south-facing roof terrace located just off Chiswick High Road in the heart of Chiswick. The flat offers excellent proportions throughout with the accommodation comprising a 21'7 south facing reception room, 19'4 full-width kitchen/dining room, two double bedrooms, lovely south-facing roof terrace with far-reaching views, two bathrooms, entrance hall, eaves storage and a share in the freehold. The flat is in a superb location just off the High Road close to numerous shops, cafes and restaurants. Transport links include Turnham Green station, local bus routes and the A4/M4 for routes in and out of London. No onward chain.

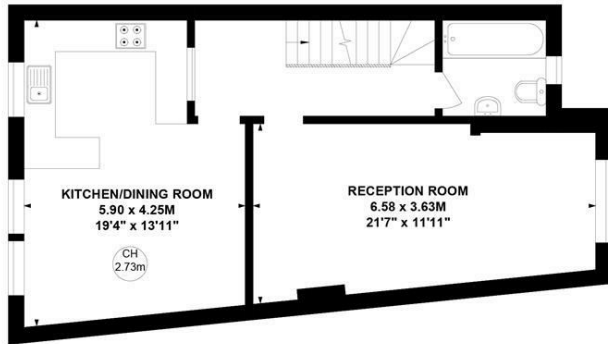
Lindens Gardens, W4

Approximate Gross Internal Area
112.01 sq m / 1205 sq ft
 (Including Eaves)
Eaves
10.82 sq m / 116sq ft

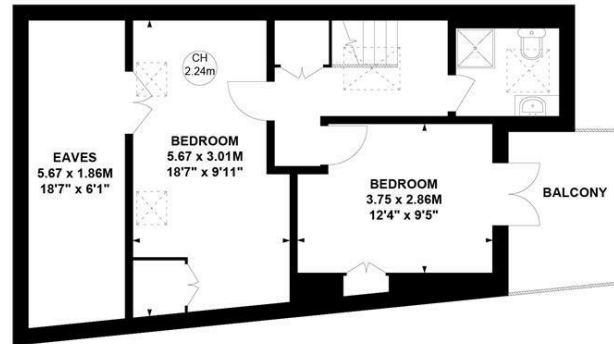
Key :
 CH - Ceiling Height



Ground Floor



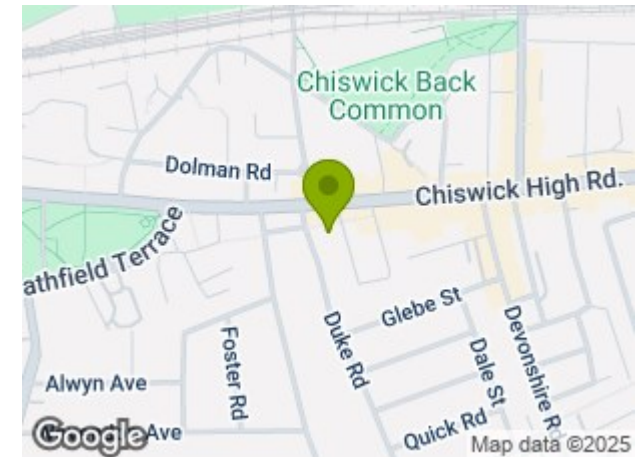
First Floor



Second Floor

Not to scale, for guidance only and must not be relied upon as a statement of fact.
 All measurements and areas are approximate only

SITUATION



5-7 Turnham Green Terrace, Chiswick, London, W4 1RG

Tel 020 8747 8800

E-mail sales@whitmanandco.com

Website www.whitmanandco.com